

The Granny Bag

Bag body

- 2 pcs of bag body pattern on exterior fabric
- 2 pcs of bag body pattern on lining fabric
- 2 pcs from this pattern on interfacing (if using)

For bag opening

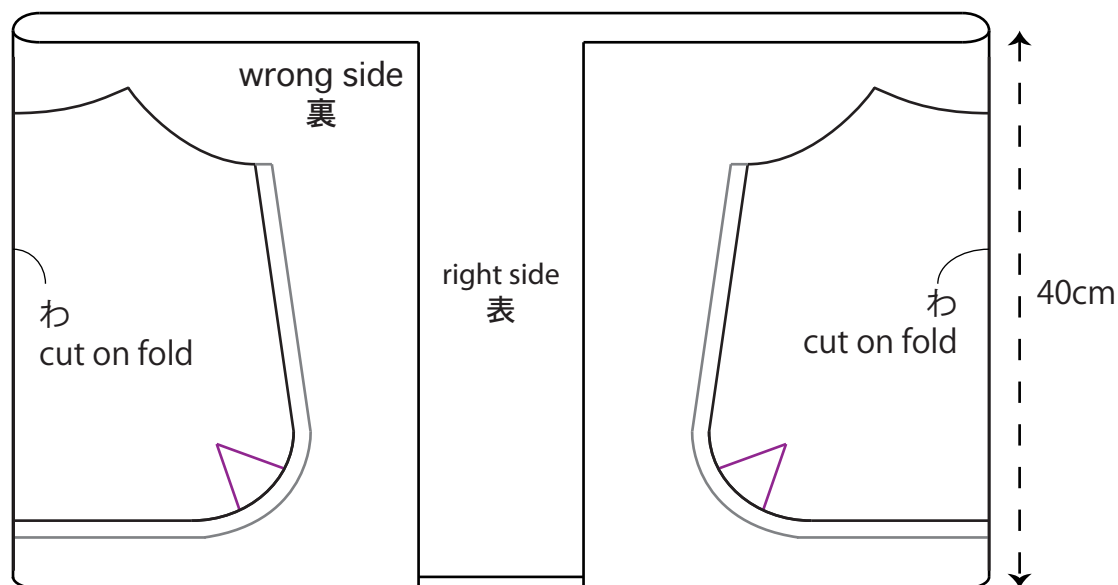
- 2 pcs of 15cm x 6cm cut on bias on fabric for handles

For handles

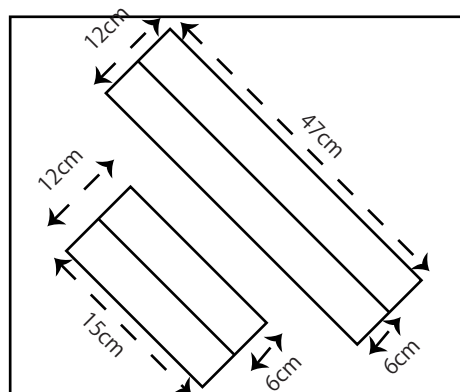
- 2 pcs of 47cm x 6cm cut on bias on fabric for handles
- 2 pcs of 27cm x 6cm of interfacing (no need to be on the bias, straight strips will do)

For pocket (feel free to modify the size to your liking)

- 1 pc of 12cm (W) x 13cm (H) on co-ordinating fabric (I used excess from exterior fabric)



Cutting diagram for bag exterior and bag lining (and interfacing if using)



Cutting diagram for bag opening and handles

All seam allowances are 1cm
unless stated otherwise

Bag Body
cut 2 for exterior fabric
cut 2 for lining fabric

わ
cut on fold